

# State Policymakers Can Build Pathways for a Strong Workforce.

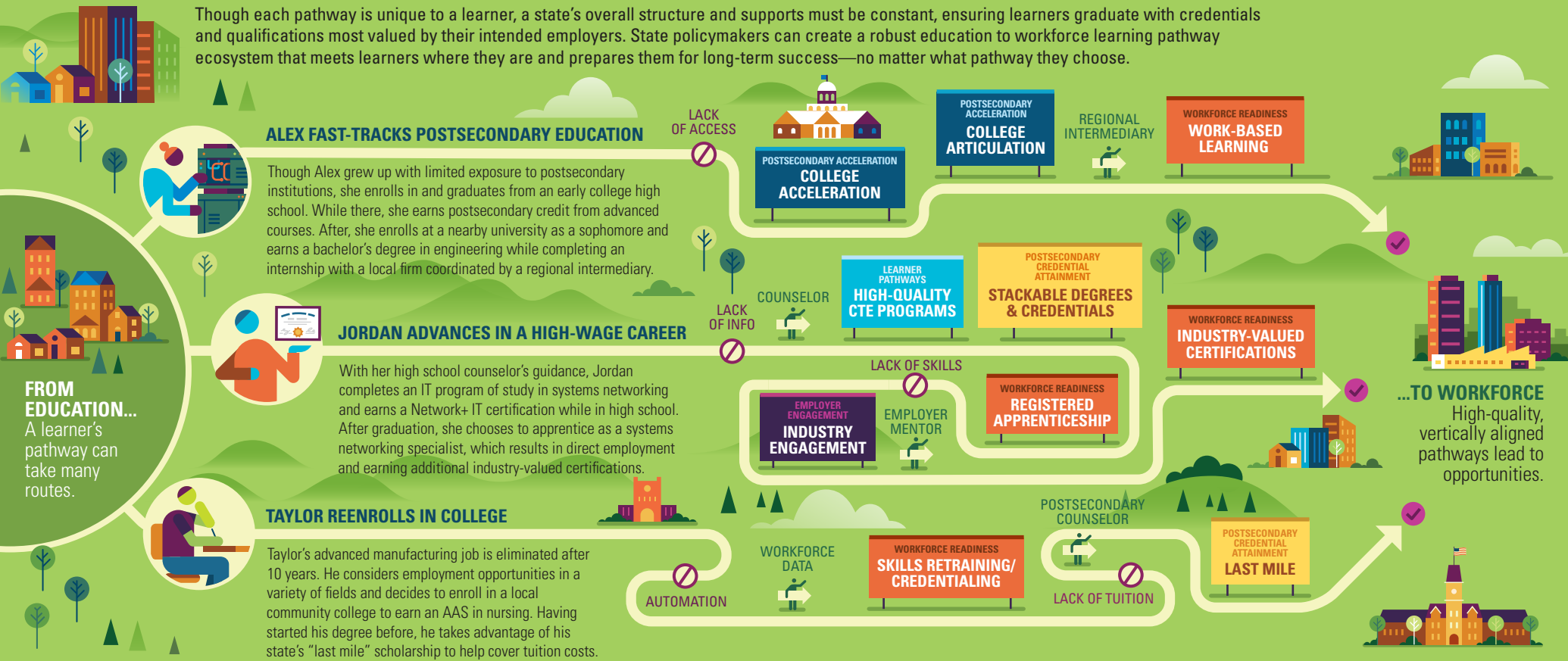
State policy is a critical lever for ensuring all learners—regardless of age—have access to high-quality, high-wage education to workforce pathways. Learner success requires pathways to align with in-demand occupations and include advancement opportunities. Policymakers must address gaps within their existing

programs and policies to strengthen the full ecosystem of policies across the K-12, postsecondary and workplace continuum. The only way to deliver learner success and create vibrant local, regional and state economies is by creating a comprehensive approach, not developing policies in isolation.

## PEOPLE

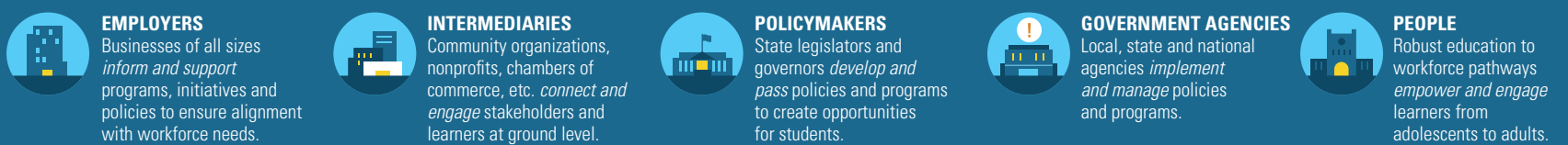
### Learners Take Different Educational Journeys.

Though each pathway is unique to a learner, a state's overall structure and supports must be constant, ensuring learners graduate with credentials and qualifications most valued by their intended employers. State policymakers can create a robust education to workforce learning pathway ecosystem that meets learners where they are and prepares them for long-term success—no matter what pathway they choose.



## PROCESS

### But it Requires Stakeholder Coordination and Awareness...



## POLICY

### ...to Design Policies that Create Opportunities.

6 FOCUS AREAS AND 21 KEY POLICIES

A robust education to postsecondary to workforce continuum requires a comprehensive set of policies across learner journeys. Together, these policies create effective on and off ramps for students, which support individual learners and the needs of each state. Every stakeholder plays an important role in designing and effectively implementing these policies.

